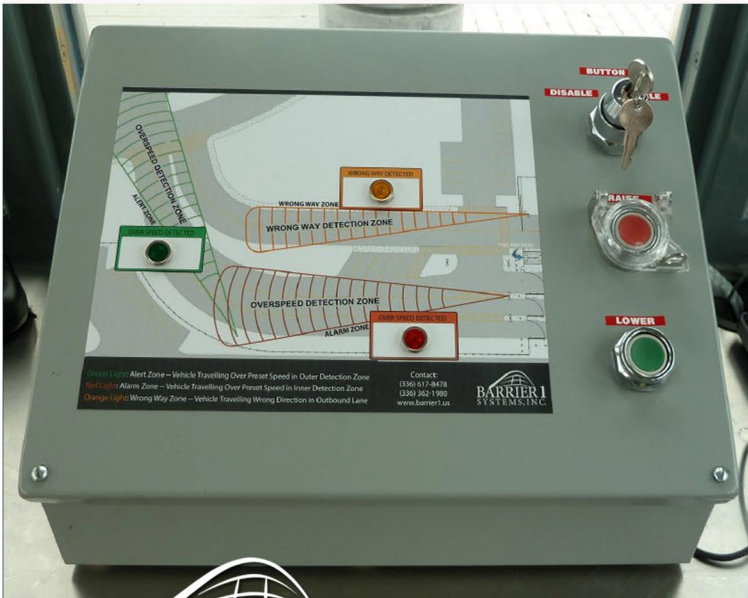
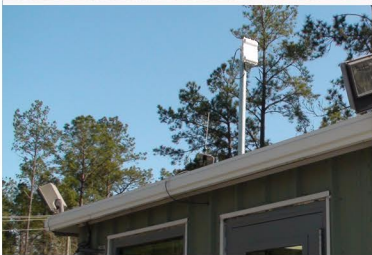


CONTINUOUS OVERSPEED DETECTION MODEL OSD-500

GS-07F-0341V
GSA



- ◆ Provides early warning to guards that vehicle(s) are approaching access control point at excessive speeds, which is annunciated by audible and visual alarms.
- ◆ Uses digital wave radar technology.
- ◆ Continuously monitors speed of all vehicles within radar detection zone(s).
- ◆ Set alarm activation at desired vehicle speed. Ability to change alarm speed in field.
- ◆ Customize radar detection zone distances. Detection zone distance from 100 to 700 feet.
- ◆ Used with final denial barriers that have limited standoff distance from the access control point.
- ◆ Power requirement is one 110 volt, 15 amp.
- ◆ Radar detects both vehicle presence and speed.
- ◆ Integrates audio and visual alarms.
- ◆ Multiple over-speed detection zones with different vehicle alarm speeds can be provided, with different alarm tones and visual alarms for each zone.
- ◆ All-weather use.

