

# SWING GATE BARRIER - MODEL SG-MAN-1200 (MANUALLY OPERATED BY 1 PERSON)

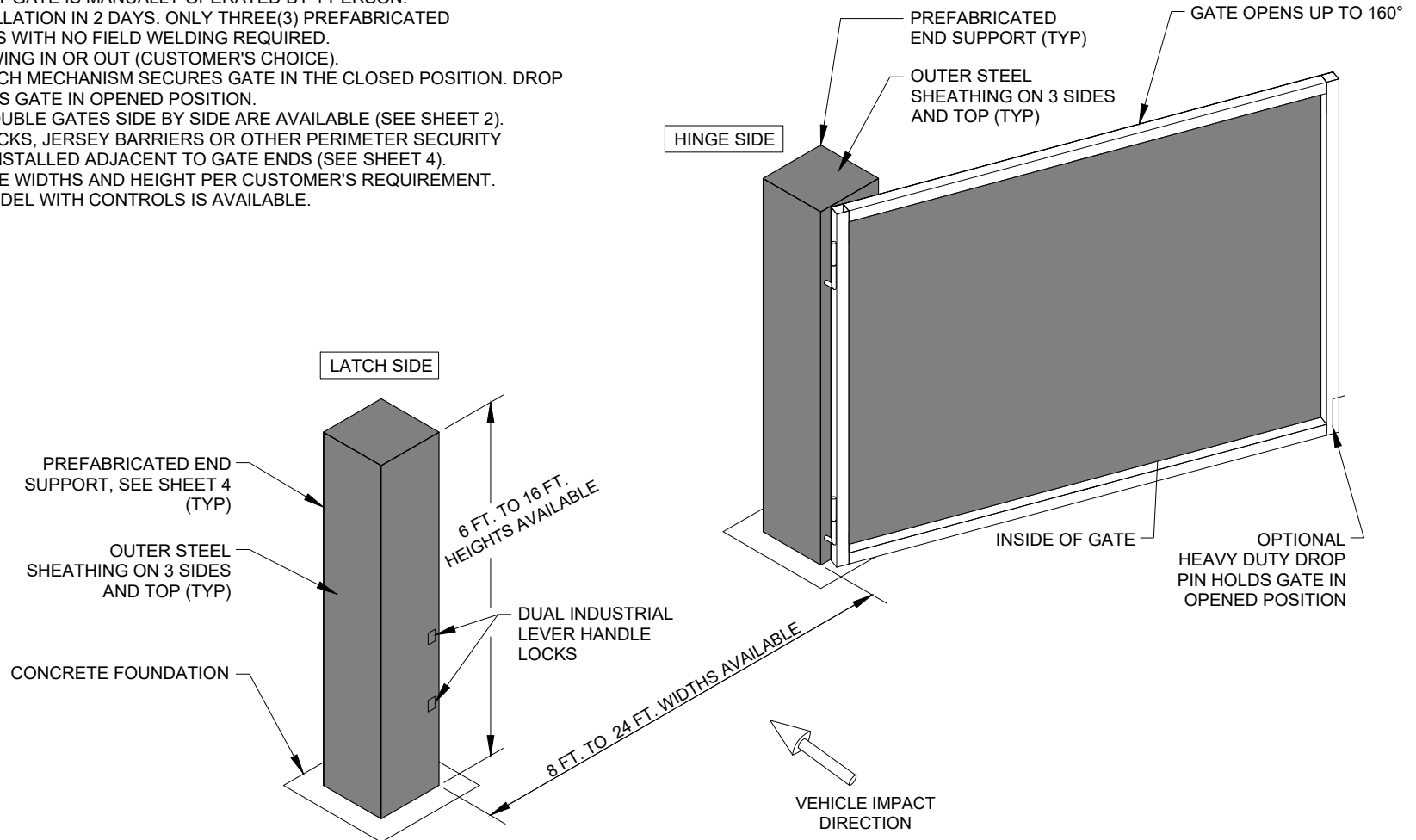
STOPS 15,000 LB. VEHICLE AT 50 MPH IMPACT (CUSTOM SWING GATE LENGTHS & HEIGHTS)

ASTM F2656-07 M50 P1(K12) CERTIFIED, APPROVED ON DoD ANTI-RAM LIST

## SWING GATE IN OPEN POSITION

### KEY CAPABILITIES

1. ROBUST FREE STANDING SINGLE BARRIER GATE STOPS 15,000 LB VEHICLE IMPACT AT 50 MPH WITHIN 1 METER OF PENETRATION (ASTM M50 P1 CERTIFIED). GATE BARRIER IS DoD APPROVED AND LISTED ON ANTI-RAM LIST.
2. LIGHT WEIGHT GATE IS MANUALLY OPERATED BY 1 PERSON.
3. QUICK INSTALLATION IN 2 DAYS. ONLY THREE(3) PREFABRICATED COMPONENTS WITH NO FIELD WELDING REQUIRED.
4. GATE CAN SWING IN OR OUT (CUSTOMER'S CHOICE).
5. LOCKING LATCH MECHANISM SECURES GATE IN THE CLOSED POSITION. DROP PIN MAINTAINS GATE IN OPENED POSITION.
6. OPTIONAL DOUBLE GATES SIDE BY SIDE ARE AVAILABLE (SEE SHEET 2).
7. FENCES, BLOCKS, JERSEY BARRIERS OR OTHER PERIMETER SECURITY BARRIER IS INSTALLED ADJACENT TO GATE ENDS (SEE SHEET 4).
8. CUSTOM GATE WIDTHS AND HEIGHT PER CUSTOMER'S REQUIREMENT.
9. ELECTRIC MODEL WITH CONTROLS IS AVAILABLE.



**BARRIER1 SYSTEMS**  
 8015 THORNDIKE ROAD  
 GREENSBORO, NC 27409  
 (336) 617-8478 (336) 617-8471 FAX  
 mlamore@barrier1.us www.barrier1.us

*PATENT PROTECTED*  
 THE DRAWINGS AND INFORMATION CONTAINED HEREIN ARE  
 PROPRIETARY AND CONFIDENTIAL AND FOR USE BY ONLY  
 PERSONS WORKING ON PROJECT WITH BARRIER1 SYSTEMS, INC.  
 DO NOT COPY OR REPRODUCE. ALL RIGHTS RESERVED.

**MANUALLY OPERATED  
 SWING GATE ACCESS  
 CONTROL BARRIER**

WEBSITE  
 DRAWINGS

SHEET: 1 OF 5  
 20210428-01-P  
 SCALE: N.T.S.

# SWING GATE BARRIER - MODEL SG-MAN-1200 (MANUALLY OPERATED BY 1 PERSON)

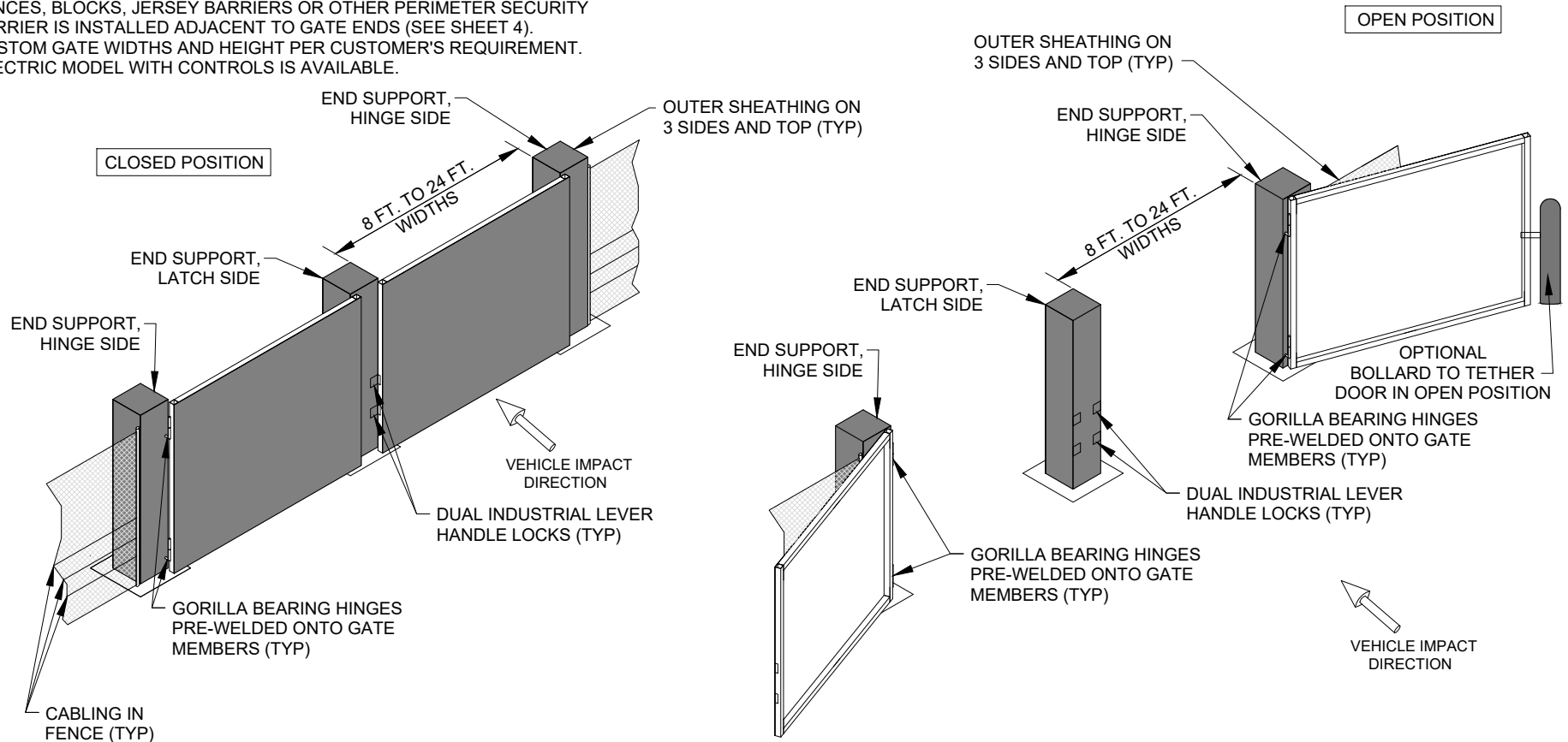
STOPS 15,000 LB. VEHICLE AT 50 MPH IMPACT (CUSTOM SWING GATE LENGTHS & HEIGHTS)

ASTM F2656-07 M50 P1(K12) CERTIFIED, APPROVED ON DoD ANTI-RAM LIST

## KEY CAPABILITIES

1. ROBUST FREE STANDING SINGLE BARRIER GATE STOPS 15,000 LB VEHICLE IMPACT AT 50 MPH WITHIN 1 METER OF PENETRATION (ASTM M50 P1 CERTIFIED). GATE BARRIER IS DoD APPROVED AND LISTED ON ANTI-RAM LIST.
2. LIGHT WEIGHT GATE IS MANUALLY OPERATED BY 1 PERSON.
3. QUICK INSTALLATION IN 2 DAYS. ONLY THREE(3) PREFABRICATED COMPONENTS WITH NO FIELD WELDING REQUIRED.
4. GATE CAN SWING IN OR OUT (CUSTOMER'S CHOICE).
5. LOCKING LATCH MECHANISM SECURES GATE IN THE CLOSED POSITION. DROP PIN MAINTAINS GATE IN OPENED POSITION.
6. OPTIONAL DOUBLE GATES SIDE BY SIDE ARE AVAILABLE (SEE SHEET 2).
7. FENCES, BLOCKS, JERSEY BARRIERS OR OTHER PERIMETER SECURITY BARRIER IS INSTALLED ADJACENT TO GATE ENDS (SEE SHEET 4).
8. CUSTOM GATE WIDTHS AND HEIGHT PER CUSTOMER'S REQUIREMENT.
9. ELECTRIC MODEL WITH CONTROLS IS AVAILABLE.

## OPTIONAL DOUBLE SWING GATE



### BARRIER1 SYSTEMS

8015 THORNDIKE ROAD  
GREENSBORO, NC 27409  
(336) 617-8478 (336) 617-8471 FAX  
mlamore@barrier1.us www.barrier1.us

**PATENT PROTECTED**  
THE DRAWINGS AND INFORMATION CONTAINED HEREIN ARE PROPRIETARY AND CONFIDENTIAL AND FOR USE BY ONLY PERSONS WORKING ON PROJECT WITH BARRIER1 SYSTEMS, INC. DO NOT COPY OR REPRODUCE. ALL RIGHTS RESERVED.

**MANUALLY OPERATED  
SWING GATE ACCESS  
CONTROL BARRIER**

WEBSITE  
DRAWINGS

SHEET: 2 OF 5

20210428-01-P

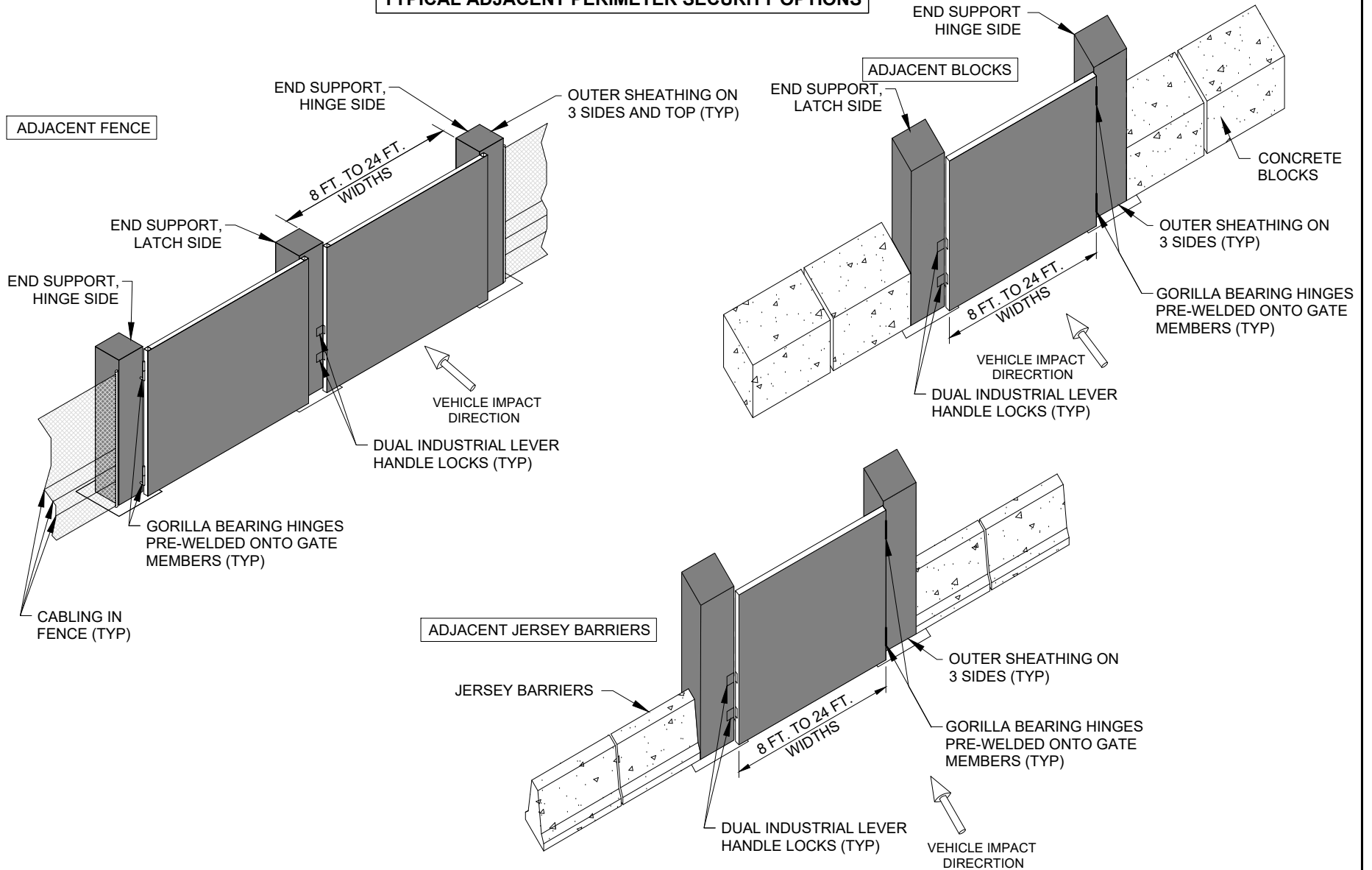
SCALE: N.T.S.

# SWING GATE BARRIER - MODEL SG-MAN-1200 (MANUALLY OPERATED BY 1 PERSON)

STOPS 15,000 LB. VEHICLE AT 50 MPH IMPACT (CUSTOM SWING GATE LENGTHS & HEIGHTS)

ASTM F2656-07 M50 P1(K12) CERTIFIED, APPROVED ON DoD ANTI-RAM LIST

## TYPICAL ADJACENT PERIMETER SECURITY OPTIONS



**BARRIER1 SYSTEMS**  
 8015 THORNDIKE ROAD  
 GREENSBORO, NC 27409  
 (336) 617-8478 (336) 617-8471 FAX  
 mlamore@barrier1.us www.barrier1.us

*PATENT PROTECTED*  
 THE DRAWINGS AND INFORMATION CONTAINED HEREIN ARE  
 PROPRIETARY AND CONFIDENTIAL AND FOR USE BY ONLY  
 PERSONS WORKING ON PROJECT WITH BARRIER1 SYSTEMS, INC.  
 DO NOT COPY OR REPRODUCE. ALL RIGHTS RESERVED.

**MANUALLY OPERATED  
 SWING GATE ACCESS  
 CONTROL BARRIER**

WEBSITE  
 DRAWINGS

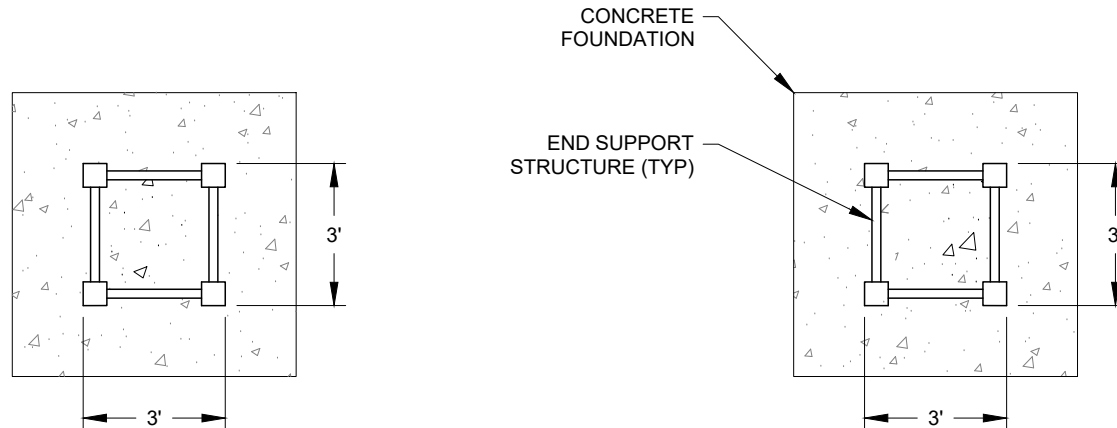
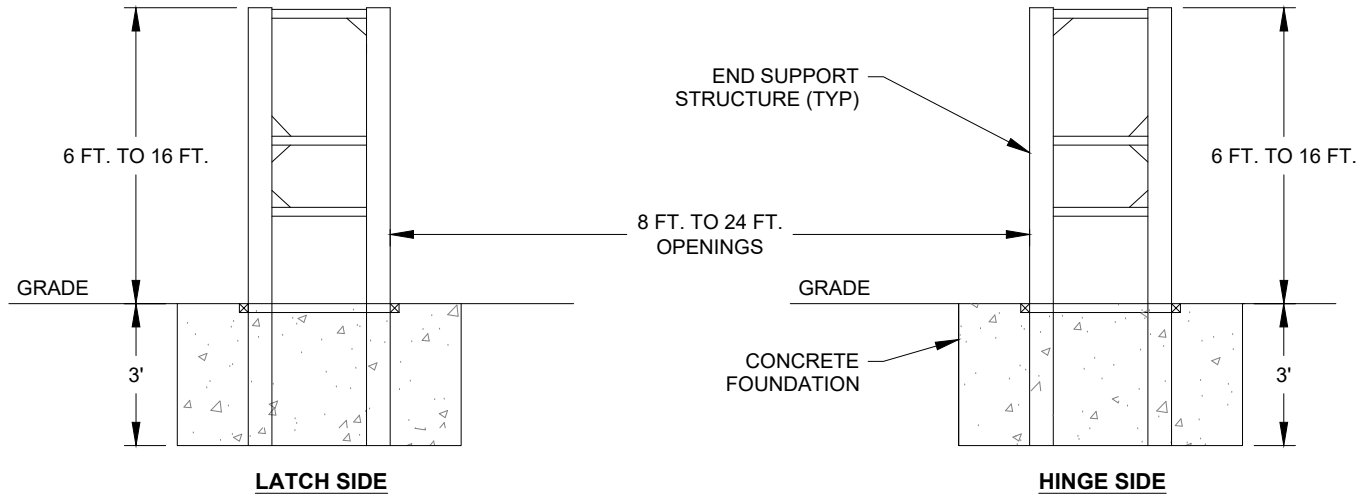
SHEET: 3 OF 5  
 20210428-01-P  
 SCALE: N.T.S.

# SWING GATE BARRIER - MODEL SG-MAN-1200 (MANUALLY OPERATED BY 1 PERSON)

STOPS 15,000 LB. VEHICLE AT 50 MPH IMPACT (CUSTOM SWING GATE LENGTHS & HEIGHTS)

ASTM F2656-07 M50 P1(K12) CERTIFIED, APPROVED ON DoD ANTI-RAM LIST

## CONCRETE FOUNDATION



**BARRIER1 SYSTEMS**  
 8015 THORNDIKE ROAD  
 GREENSBORO, NC 27409  
 (336) 617-8478 (336) 617-8471 FAX  
 mlamore@barrier1.us www.barrier1.us

*PATENT PROTECTED*  
 THE DRAWINGS AND INFORMATION CONTAINED HEREIN ARE  
 PROPRIETARY AND CONFIDENTIAL AND FOR USE BY ONLY  
 PERSONS WORKING ON PROJECT WITH BARRIER1 SYSTEMS, INC.  
 DO NOT COPY OR REPRODUCE. ALL RIGHTS RESERVED.

**MANUALLY OPERATED  
 SWING GATE ACCESS  
 CONTROL BARRIER**

WEBSITE  
 DRAWINGS

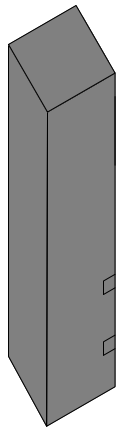
SHEET: 4 OF 5  
 20210428-01-P  
 SCALE: N.T.S.

# SWING GATE BARRIER - MODEL SG-MAN-1200 (MANUALLY OPERATED BY 1 PERSON)

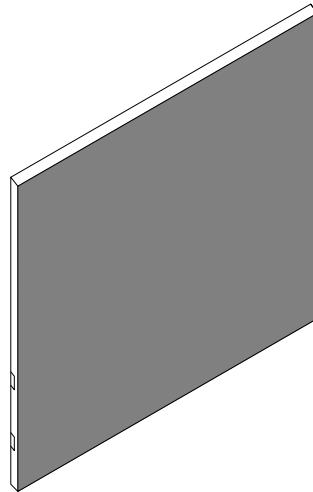
STOPS 15,000 LB. VEHICLE AT 50 MPH IMPACT (CUSTOM SWING GATE LENGTHS & HEIGHTS)

ASTM F2656-07 M50 P1(K12) CERTIFIED, APPROVED ON DoD ANTI-RAM LIST

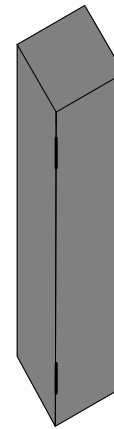
## PREFABRICATED COMPONENTS PER GATE PROVIDED BY BARRIER1 SYSTEMS



(1) EACH:  
PREFABRICATED END  
SUPPORT STRUCTURE,  
LATCH SIDE



(1) EACH:  
PREFABRICATED GATE WITH  
GORILLA BEARING HINGES



(1) EACH:  
PREFABRICATED END  
SUPPORT STRUCTURE,  
HINGE SIDE



(32) EACH:  
VERTICAL REBAR  
(INSIDE EACH TUBE)

## MATERIALS PROVIDED BY INSTALLATION CONTRACTOR

1. INSTALLATION CONTRACTOR TO PROVIDE ABOUT 8.5 TOTAL CUBIC YARDS OF CONCRETE.



**BARRIER1 SYSTEMS**  
8015 THORNDIKE ROAD  
GREENSBORO, NC 27409  
(336) 617-8478 (336) 617-8471 FAX  
mlamore@barrier1.us www.barrier1.us

*PATENT PROTECTED*  
THE DRAWINGS AND INFORMATION CONTAINED HEREIN ARE  
PROPRIETARY AND CONFIDENTIAL AND FOR USE BY ONLY  
PERSONS WORKING ON PROJECT WITH BARRIER1 SYSTEMS, INC.  
DO NOT COPY OR REPRODUCE. ALL RIGHTS RESERVED.

**MANUALLY OPERATED  
SWING GATE ACCESS  
CONTROL BARRIER**

WEBSITE  
DRAWINGS

SHEET: 5 OF 5

20210428-01-P

SCALE: N.T.S.